

Zoning Map

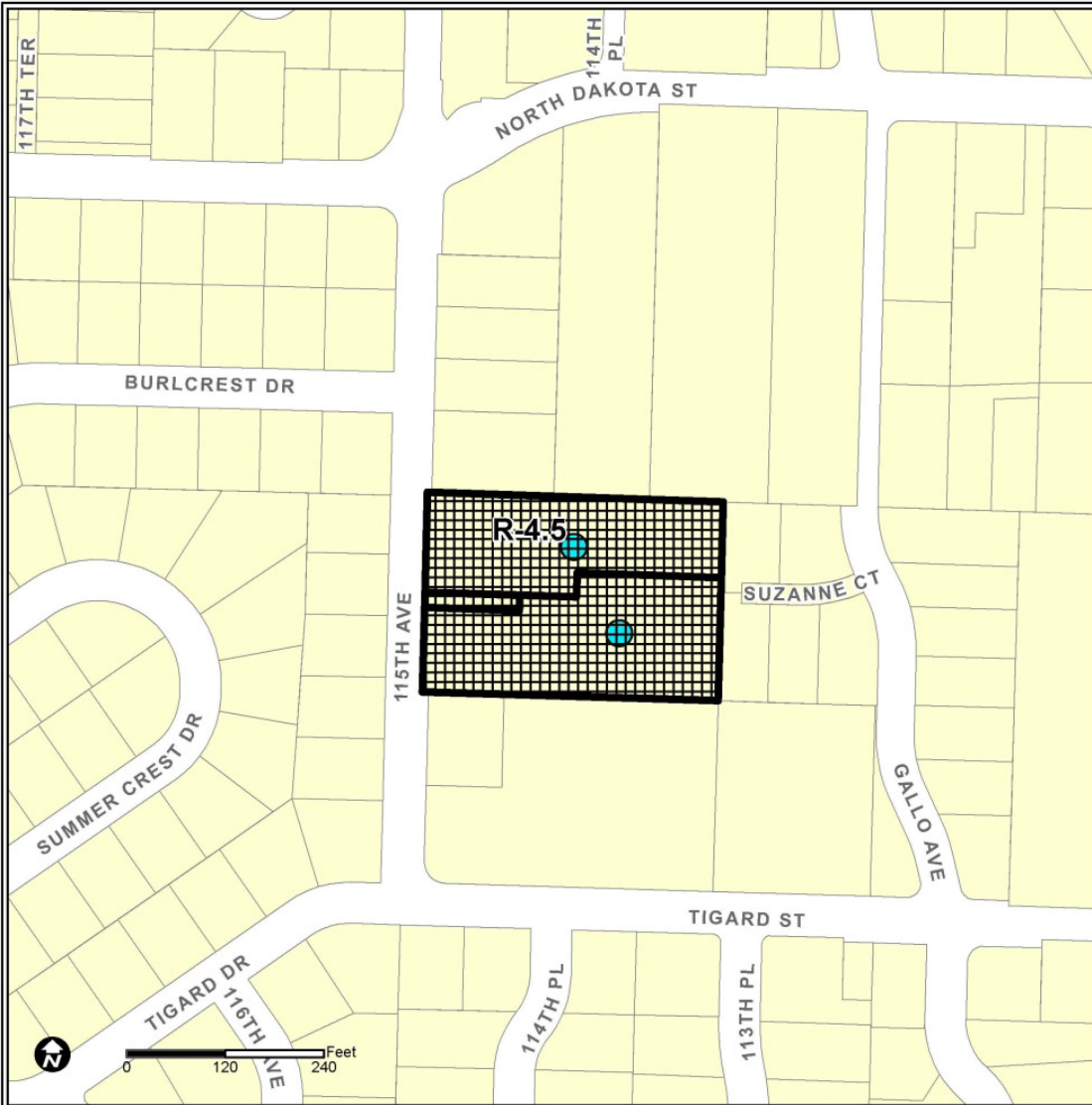
Generalized Zoning Categories

Legend

-  Subject Site
- Zone Description**
-  Residential
-  Mixed Use Residential
-  Mixed Use Central Business District
-  Commercial
-  Mixed Use Employment
-  Industrial
-  Parks and Recreation
-  Washington County Zoning

Overlay Zones

-  Historic District Overlay
-  Planned Development Overlay



Map Printed: 25-Apr-16

INFORMATION ON THIS MAP IS FOR GENERAL LOCATION ONLY AND SHOULD BE VERIFIED WITH THE DEVELOPMENT SERVICES DIVISION.

DATA IS DERIVED FROM MULTIPLE SOURCES. THE CITY OF TIGARD MAKES NO WARRANTY, REPRESENTATION, OR GUARANTEE AS TO THE CONTENT, ACCURACY, TIMELINESS OR COMPLETENESS OF ANY OF THE DATA PROVIDED HEREIN. THE CITY OF TIGARD SHALL ASSUME NO LIABILITY FOR ANY ERRORS, OMISSIONS, OR INACCURACIES IN THE INFORMATION PROVIDED REGARDLESS OF HOW CAUSED.

COMMUNITY DEVELOPMENT DEPARTMENT

"A Place to Call Home"

City of Tigard
 13125 SW Hall Blvd
 Tigard, OR 97223
 503 639-4171
 www.tigard-or.gov

